

The earliest mention of Jews in Błażowa dates back to the mid-17th century. During the economic boom in the second half of the 19th century, they became the town's financial elite, acquiring real estate, investing in trade, and establishing credit and economic associations. Social and cultural life also flourished during this period. However, the economic crisis of the late 19th century led many Jews to emigrate, primarily to the United States. Błażowa was recognised as a centre of Hasidism. Before World War I, Rabbi Tzvi Elimelech Szapiro, known as Tzvi Latzaddik and the grandson of Tzvi Elimelech of Dynów, lived in the town.

Before the outbreak of World War II, the Jewish community in Błażowa numbered over 900 individuals. During the occupation, due to the resettlement of people from other towns, this number increased to approximately 1,100. An open ghetto was established, and its residents were ultimately resettled to the Rzeszów ghetto in June 1942, from where they were transported to the Bełżec extermination camp, where they were murdered. After the war, the Jewish community in Błażowa did not recover.

Project Authors:  
Magdalena Kowalska-Cheffey  
Jakub Heller

Graphic design of the Map: Zuzanna Heller  
Contact: Miejsko-Gminna Biblioteka Publiczna w Błażowej  
Ul. 3.Maja 24  
36-030 Błażowa  
Phone: 172297170 mail: mgbpblazowa@gmail.com  
www.biblioteka.blazowa.net

This activity was implemented as part of the SHTETL ROUTES NETWORK INCUBATOR training program organised by the "Grodzka Gate - NN Theatre" Centre in Lublin. The program is part of the "Mi Dor Le Dor Europe" project, which is coordinated by AEPJ (European Association for the Preservation and Promotion of Jewish Culture and Heritage).

Funded by the European Union.

The expressed views and opinions are solely those of the author(s) and do not necessarily reflect the views and opinions of the European Union or the European Education and Culture Executive Agency. The European Union and the grant provider are not responsible for the content presented here.

Błażowa 2025 r.



# A WALK

with the Atlas Family

IN THE FOOTSTEPS OF THE BŁAŻOWA JEWS

Discovering the forgotten heritage  
of our town.





↑ Rzeszów



The Jewish Cemetery, established in the 19th century.  
End of ul. Mickiewicza

XI.



The primary school in Błażowa  
was located at this site.  
The building has since been demolished.  
ul. Armii Krajowej 16

X.



Błażowa

VIII.

Originally, this location housed  
the shops of Wolf Intrator and Stefa Wanianka.  
It is now occupied by various shops.  
Plac Jana Pawła II 4



Ona Strona

IX.

St. Martin's Parish Church.  
ul. Armii Krajowej 1



Księżę Budy

Originally the rabbi's house, it is now  
a residential building and rehabilitation center.  
Plac Rynekowy 1



Municipal Office in Błażowa.  
Plac Jana Pawła II 1



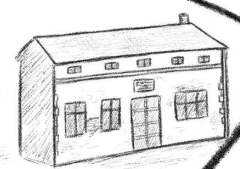
VII.

Originally, the Atlas family's home was located here.  
Later, it became a police station.  
ul. 3 Maja 8



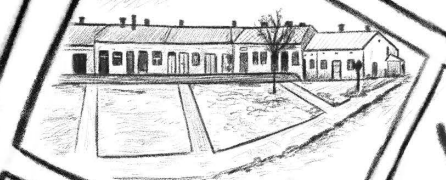
II.

Originally a Jewish inn, it is now  
the Municipal and Communal Public Library.  
ul. 3 Maja 24



I.

Before World War II, Błażowa's market square  
was a bustling place.  
Today, the town features a green space in that area.  
Plac Jana Pawła II



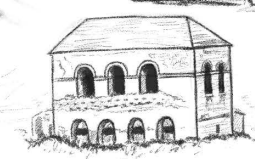
V.

The main synagogue of Błażowa was  
formerly located here;  
it is now a Long-Term Care and Palliative Facility.  
ul. Marszałka Józefa Piłsudskiego 6



IV.

There used to be a mikveh in this location,  
but now there are residential houses in its place.  
ul. Generała Władysława Sikorskiego



III.

Dynów ↓

ul. Armii Krajowej

Ks. Bronisława Markiewicza

Kwiatkowskiego

ul. Armii Krajowej

Jagiellońska

Marszałka Józefa Piłsudskiego

Gen. Władysława Sikorskiego

Zielona

Grunwaldzka

ul. 3 Maja

Plac Rynekowy